

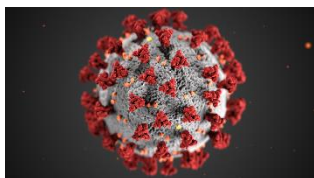
# Hevingham News

Summer 2020

MARCH -  
APRIL 2020



JUNE 2020



(by Shane Ward)

On 24 March 2020, the UK residents were instructed by the government to stay at home to protect the

National Health Service being overwhelmed by too many people becoming infected and seriously unwell with coronavirus; now known as COVID-19. So Hevingham village joined the rest of the UK to 'Stay safe. Protect the NHS. Save lives'.

But not everyone could stay at home. Key workers continued working to keep the basic necessities of the country going, like medical, retail and sanitary staff and a whole host of other essential activities. However, some people who were not key workers, still wanted to contribute more, including some within this village and although this magazine issue marks the period of time around the start of coronavirus, the focus of our attention should be on the people who have made a difference. I apologise in advance if I don't mention everyone. I am certain there are others that have not been brought to my attention but I would like to acknowledge for the record those who have exemplified the community spirit that makes Hevingham such a great place to live.

I begin with the Hevingivers only for the fact that they initiated a volunteer support group about a week before the government thought it was a good idea. The Hevingivers members and the 56 volunteers who put themselves forward were able to ensure that anyone in the village who needed it had access to essential supplies of both food and prescription medication. Volunteers were also in communication by telephone to make sure people who were completely isolated had a connection with the outside world.

The laurel club continued to provide meals on wheels. People started making items of hospital workers when

Personal Protective Equipment (PPE) became difficult to get hold of. Ian Knight put his 3D printer to work to create face shields for front line workers. Hayley Rolf made face masks for whoever wanted them and Karen Harris made uniform bags for hospital staff. Michelle Cotton organised a way to donate hand gels and creams for hospital staff.

While I completed a daily online blog on the Hevingham People site, Sharon Ward, now known more widely as 'Nanny Sharon' read online stories to the children - one chapter each day. She also hosted a weekday song session for everyone to join in.

Margaret McPhee has been in the thick of things, putting together links between those in need and those who can meet that need, while also continuing spiritual services and offering support and guidance.

The list of acknowledgement cannot be complete with saying thank you to the children of Hevingham who contributed brilliantly with an amazing display of window pictures or rainbows and funny faces. The children also drew pictures and wrote cards to cheer up the people who have had to shield from the coronavirus. Some of these pictures you can see in this magazine but the online issue will have them all in full colour, so please go and take a look.

One more acknowledgment should be made to the person without who there would be no magazine. Tracey Matthewson, in a voluntary capacity, has done a great job in producing the village magazine and also continues to publish useful information via Hevingham News and other Hevingham based websites.

We should be proud of our community spirit and how the village has supported each other through what is probably the most unusual time we have had to face. It is this kind of action that offers hope for the future and demonstrates the kindness and goodwill that we should recognise and celebrate. Well done to all.



*Ian Knight with his 3D printer creating face shield masks.*



*Hayley Rolf's homemade facemasks for essential workers & anyone in need.*



## Useful Telephone Numbers

Aylsham High School – 01263 733270  
Aylsham Hungate Street Doctors – 01263 733693  
Aylsham Library – 01263 732320  
Aylsham Market Place Doctors – 01263 733331  
Bottle Bank Emptying (BDC) – 01603 430575  
Broadland District Council – 01603 431133  
Bus Timetable Sanders –  
<http://www.sanderscoaches.com/timetables/index.aspx>  
District Councillor: Julie Neesam  
Dog Fouling (report): Suzie Flatt (Environmental health officer) -  
01603 430542  
Drayton & St. Faiths Doctors – 01603 867532  
Hevingham Parish Church: Revd. Margaret McPhee – 01603 893108  
Email: [revmargaretmcphee@gmail.com](mailto:revmargaretmcphee@gmail.com)  
Hevingham School– 01603 754667  
Hevingham Village Hall – 01603 754570  
John Hall Charity (Clerk): Suzanne Benton – 01603 754488  
Ladies Club: Caroline Medler – 01603 755355  
Laurel Club: Anthea Coldham – 01603 754066  
Norfolk County Council – 0844 800 8020  
Village Hall booking Clerk: Julie Elia – 01603 754660

## Helplines

Age UK Norfolk – 0300 500 1217 [www.ageuknorfolk.org.uk](http://www.ageuknorfolk.org.uk)  
Alzheimers society - 01603 763556 [www.alzheimers.org.uk](http://www.alzheimers.org.uk)  
Carers Matter Norfolk – 0800 083 1148 [CarersMatterNorfolk.org.uk](http://CarersMatterNorfolk.org.uk)  
Equal Lives - 01508 491210 [www.equallives.org.uk](http://www.equallives.org.uk)  
Matthew Project - 0800 970 4866  
Mind – 0300 466 6463 [www.mind.org.uk](http://www.mind.org.uk)  
Norfolk Citizens Advice - 03444 111 444  
Norfolk County Council Childrens & Adults Social Services - 0344 800 8020  
Norfolk Young Carers forum - 01953 878143 [www.nycf.org.uk](http://www.nycf.org.uk)  
Police (Non-emergency) – 101    Emergency - 999  
Sane - 0300 304 7000 [www.sane.org.uk](http://www.sane.org.uk)  
The British Red Cross – 01603 426361 [www.redcross.org.uk](http://www.redcross.org.uk)  
The Samaritans - 116 123 [www.samaritans.org](http://www.samaritans.org)  
The Silver Line - 0800 470 8090 [www.thesilverline.org.uk](http://www.thesilverline.org.uk)  
Trusted trader - [www.norfolk.gov.uk/trustedtrader](http://www.norfolk.gov.uk/trustedtrader)  
UK Power Networks - 0800 316 3105 [www.ukpowernetworks.co.uk](http://www.ukpowernetworks.co.uk)

To keep up to date with what is happening in your village please visit the Parish Councils website-  
<https://hevinghamhampc.wixsite.com/hevinghampc>

## Hevingham Parish Councillors

Mr Paul Carrick – (Chairman)	01603 755309
Mr Shane Ward – (Vice Chairman)	01603 755314
Mr Mervyn Williamson – (Village Hall Rep)	01603 754669
Mr Ian Nickalls –	01603 755667
Mr Simon Howes –	01603 755234
Mr Alan Bunn –	01603 755340
Mr Terence Palmer –	01603 754855
Mrs Jacqui Norton –	01603 754342
Mr David Holmes –	01603 755203
Mrs Anita Ramsbottom – (Youth Advocate)	01603 755448
Mrs Suzanne Benton –	01603 754488
Karen Medler – (Clerk to the Parish Council)	01603 754134

(Mon - Fri / 9am-3pm excluding Bank Holidays)  
Email: [hevinghampc@live.co.uk](mailto:hevinghampc@live.co.uk)



**Coronavirus (COVID-19)**  
**Business Support Helpline - 0800 024 1222**



## Mobile Postal Van Service

The van provides a full range of Postal Services including stamps, mail, cash deposits and withdrawals,  
Car tax, bill payments, pension allowances, cheque deposits.

Wheelchair access.

WEDNESDAYS – Hevingham Village Hall 9am-10am

Welcome to the Summer Edition of the Hevingham News.

We hope you are all keeping safe and well throughout this difficult time.

This edition is a little bit different to the usual magazine as a lot of meetings and events have been cancelled.

However, that doesn't stop us sharing the goings on in the village.

Although we have been in lockdown, many local businesses continue to go above and beyond to get supplies to all those in need.

The Hevingivers have stepped in with volunteers to help people in need of food, items, medicines and just a phone call to check on those isolating.

We have teams of helpers making sure the magazines get to you all. A big thank you all.

I am especially proud of the children who have remained so positive and kept our spirits up. Seeing the rainbows, funny faces and other creativity has been wonderful!

The Hevingham helpers team allowed me to share these pictures which I hope to brighten your day. Please send in your news to [traceymatthewson@btinternet.com](mailto:traceymatthewson@btinternet.com)

**Stay Safe! - Tracey**



*Stephanie Watkins banner brightening the village*

#### WOODLAND WALKS-

It's that time of year where the adders like to bask in the sun in the woods and on the heathland. Just a little reminder when we are also heading for the sunny spots to be aware of these after a recent sighting.

It's the UK's only venomous snake but they rarely attack and only bite in defense if disturbed as a rule.

In the unlikely event you or your dog are bitten always seek medical or veterinary attention.





*As the warm weather approaches taking to the water is a great way to cool off. Here are some tips to stay safe at the beach and in the water.*



### OPEN WATER SAFETY ADVICE

- Always check the conditions of the water and guidance signs, strong currents can rapidly sweep people away
- Do not enter fast flowing water
- Swim parallel with the shore and not away from it
- Avoid drifting in the current
- Be aware of hazards under the water. Not always visible
- If you feel cold get out of the water, cold water can make swimming difficult
- Never Drink alcohol and swim
- If possible wear a lifejacket, when boating or fishing
- Always swim in a supervised area and never alone
- If someone is in danger call 999 – if safe try to help the person with a stick, pole, branch, clothing or a buoyancy aid
- Don't swim in lakes, quarries, reservoirs or rivers
- Always provide children with armbands, rings, jackets or floats and never leave them unattended
- Always check water quality for toxins
- Always check the depth, uneven banks and riverbeds for dangers

### IF SOMEONE IS HAVING DIFFICULTY IN THE WATER

- Shout reassurance to them
- Shout for help and call 999
- If safe for you to do so try and help them with anything to hold onto or that floats until help arrives
- Keep close eye on them and talk to them to keep them calm





## HEVINGHAM GOSPEL HALL

SUNDAY EVENING SERVICES 6.30.pm.

Hello Everyone, Nice to be here again.

We should thank God, we haven't got the Corona-virus, which, made me think of the words of the Lord Jesus, He said "In the last days there will be pestilences (Matthew 24.v7)".

Corona-virus is world wide and no respecter of persons. I was talking to a friend of mine on the phone recently, he sounded alright and didn't say he was ill or anything. The next day his son rang to tell me his father was dead.

You don't have to have corona-virus to die, my friend didn't have it, but, what he did have was faith in the Lord Jesus. I am glad about that.

The Lord Jesus said, "When I come will I find Faith on the earth (Luke 18.v8)"

The Bible says we are all sinners (Romans 3.v23), and we all know we are.

Three questions to ask ourselves are:

1. Have I sincerely asked the Lord to forgive me.
2. Do I trust sincerely in what He did on the Cross when He paid the penalty for my sins,
3. Do I sincerely love Him for it.

Hope to see you soon, God Bless, Keith and Ann Medler.

## HEVINGHAM RELIEF IN NEED CHARITY

### Does any of the following apply to you?

Are you on Low Income?

Are you in receipt of Disability Allowance or Personal Independence payment? Are you in receipt of Employment Support Allowance? Are you in receipt of Pension Credit? Are you in receipt of Universal Credit?

If so, you may be eligible for a grant from the charity.

Please make a written application in confidence, to any of the trustees below:

Sarah Balls, Heath Farmhouse, 30 The Heath, Hevingham, Norwich NR10 5QL

David Faulkner, Barley Corn House, Halls Corner Lane, Hevingham, Norwich NR10 5NQ

Susan Jarvis, The Old Rectory, Cromer Road, Hevingham, Norwich NR10 5QU

Rev Margaret McPhee, The Rectory, 1b Gordon Godfrey Way, Horsford, Norwich NR10 3SG

Mervyn Williamson, Common Farm, The Heath, Hevingham, Norwich NR10 5QL

## Aylsham Chess Club

International recognition for local chess player

Local chess enthusiast, John Wickham, has gained recognition on the international stage. The Fédération Internationale des Échecs (FIDE) / International Chess Federation has appointed John as a FIDE Arbiter at their 90th FIDE Congress, held in Abu Dhabi, United Arab Emirates.

An Arbiter's role is to ensure the smooth running of events and to act in a similar manner to a football referee - sometimes using technology to spot infringements! John will now be involved in running international chess events taking place in the UK and abroad.

John already has a very illustrious chess career. He is Honorary Life Vice-President of the English Chess Federation (ECF), Chairman of Norfolk County Chess Association (NCCA) and the East Anglian Chess Union (EACU) and, as a Qualified ECF Arbiter, is involved in organising and running most Chess Congresses in East Anglia and is a regular Arbiter at the British Chess Championships.

In addition to this, John regularly plays chess for Aylsham Chess Club.

Bob Grindrod (Chair of Aylsham Chess Club) commented: "We are very proud of John's achievement in being awarded this title by FIDE. The honour is recognition of John's hard work, dedication and performance over many years"

To find out more about Aylsham Chess Club e-mail: [aylshamchessclub@gmail.com](mailto:aylshamchessclub@gmail.com) and for details of other Norfolk Chess Clubs visit: [www.norfolkchess.org/clubs.html](http://www.norfolkchess.org/clubs.html)

## Chess Players Coping with COVID-19

Aylsham Chess Club players have resorted to technology to help them cope with social distancing and social isolation.

Normally chess players shake hand before and after facing their opponents 'over the board'. Norfolk County Chess Association (NCCA) has decided to suspend the 2019-20 Norfolk chess season and suggests clubs should stop playing 'face to face chess'.

Aylsham Chess Club's novel approach is to adapt some computer software ( [www.chess.com](http://www.chess.com) ) to allow their players to continue playing each other and other chess players around the world. Jonathan Reeve (Aylsham Chess Club - Secretary) commented: "We are particular concerned about elderly chess players staying healthy."

One of the Aylsham Chess Club players has kindly created a 'portal' to allow our players to continue enjoying chess over the coming weeks. Yesterday, I played someone in Canada which was great - even though I lost!"

To find out more about Aylsham Chess Club e-mail: [aylshamchessclub@gmail.com](mailto:aylshamchessclub@gmail.com)  
For details of other Norfolk Chess Clubs visit: [www.norfolkchess.org/clubs.html](http://www.norfolkchess.org/clubs.html)

# Protect yourself against scams

Norfolk  
Against  
Scams  
Partnership

## Norfolk Trading Standards

🖱️ [norfolk.gov.uk/scams](http://norfolk.gov.uk/scams)



[norfolkCCTS](#)



[norfolktradingstandards](#)

## Action Fraud

🖱️ [actionfraud.police.uk](http://actionfraud.police.uk)



[actionfraudUK](#)



[actionfraud](#)

## Take Five to Stop Fraud

🖱️ [takefive-stopfraud.org.uk](http://takefive-stopfraud.org.uk)



[TakeFive](#)



[TakeFiveStopFraud](#)



## SPOTLIGHT

Shane Ward interviews...

Spotlight is a series of articles for Hevingham Parish Magazine that shines a light on selected villagers who are notable for their contribution to the village or the wider community.



**Tanya Wiseman** lives in Hevingham. She is the Lead Health and Social Instructor, Duke of Edinburgh Manager and Activities Week Coordinator for Aylsham High

School. Therefore she is a well known face to many children in the village.

The children will know how involved Tanya is in putting on the annual school show and if anyone has had the good fortune to see one, will confirm that it is an amazing production, not only in it's professional presentation and execution but also for the stunning acting performances given by students.

So what is Tanya's role in this? She tells me she: designs sets, paints, makes props and source props. Oversees the design of the poster, tickets, flyers and banners all with the support of Seesaw Graphic Design (Leon Streeter). Promotion via Facebook, Twitter the local magazines EDP and North Norfolk news. Selling of the tickets via the Box Office on a Wednesday and via Ticketsource. All admin for the show and letters required to support with sponsorships. To support the Director with decisions and rehearsals, the Musical Director and music teacher at school and choreographers. Making the school hall into a theatre erecting the black curtains, numbering all the seats on the chairs and the floor. Arranging the refreshments and arranging the alcohol licence.

And while doing all of this, she is also supporting her Duke of Edinburgh students who help as part of their awards front of house and backstage. They can do this for their Bronze or Silver award.

Now this seems to be such a big event in the school calendar, one has to ask what benefit it has for the community and is it worth this considerable effort? Tanya explains:

*"It's like belonging to a huge extended family, we start rehearsals in September every Saturday from 9am to 3pm, and each Monday and Wednesday after school for 2hrs. It's around 7 months of continued rehearsals. The students are so dedicated, loyal and passionate and a joy to work with. - it's a huge achievement for us all and something so special, it's really hardly to describe!"*

*It builds up effective communications between the home of our students, local community and the school. Its important for the school to have good community relations and to be able for the local community to engage with our students. It's a wonderful feeling being able to show the capabilities of our very talented students to the wider communities. You would not believe that these students performing are actually only high school students. If you have never seen an Aylsham High School show, then it's a must! They act with such professionalism and enthusiasm.*

*Being part of this extended family makes me feel very honoured, for the students it makes them part of a team and helps them to develop their own individuality. Develops their self-confidence gives them lifelong memories, something to treasure forever."*

Having seen a number of shows myself I have to agree that it takes a lot of commitment, effort and teamwork to put together these extraordinary shows. It certainly can't be done on the cheap. Tanya offers a rough breakdown of the costs involved.

*"There are 5 performances to the public and 2 dress rehearsals. There can be around 1000 people which come and watch from parents, families and the local community.*

***The cost of the show:***



Lights & Sound = £2750

Costumes = £2500

Orchestra = £2500

Choreographers = £600

Graphic Designs/Artwork = £700

Vinyl's = £1000

Props = £300 “

Wow! This amount of money for a school play? You know it has to be good to put this much money and effort in.

Tanya informs me that she has been working on Aylsham School shows for the last 15 years. The performances presented were:

***Fiddler on the roof, Hello Dolly, Oklahoma, Half a Sixpence, Annie, Crazy for you, Carousel, Sound of Music, King & I, Guys & Dolls, 42<sup>nd</sup> Street, Sister Act*** (and the most recent), ***My Fair Lady***.

She has also worked on a number of plays:

***Romeo and Juliet, Our Day Out, Midsummer Nights Dream, Comedy of Errors, Railway Children, David Copperfield, Kes, Ernie's Incredible Illuminations, Lion Witch and the Wardrobe, Dads Army, Flint Street Navity and A Christmas Carol.***

Having been involved in so much over the years, I needed to ask Tanya some additional question about her preferences and memories:

1. How did you first become involved in the shows?

*“Fiddler on the Roof was my first show, in 2005”*

2. What has been your favourite show?

*“The Sound of music”*

3. What do you think was the most difficult or challenging show?

*“42<sup>nd</sup> Street because of the 4 huge staircases that had to be pushed together with over a 40 meters of rope lights attached it was a nightmare, but we made it work!”*

4. Is there any single thing that you did for any of the shows that you were most proud of?

*“Photos and graphics for Eddie Souther police office, it looked so good, when the lights were on it.”*

5. Have any of the students gone on to become actors?

*“We have a lot at drama colleges and a few in dance schools. One is now a model, and a few have gone on to be Doctors”*

6. Is there a show that you have not done that you would like to do?

*“Grease but you have to have the correct cast to play the parts.”*

7. Have there been any scary moments when things could have gone disastrously wrong?

*“In the Sound of Music one of the 12ft pods nearly fell over as it got caught in the curtain, we don't use these anymore as they were too dangerous.”*

8. Any funny moments?

*“My Fair Lady was full of humour and wit; the cast were fab!”*

9. Tell me about the backstage crew, the unsung and unseen workers of scenery shifting and props. How many are there?

*“The crew are awesome, my heroes. There are normally 4 each side stage left and stage right. 2 backstage runners, ensuring the cast have taken their small props on. Then around 6 front of house showing the audience to their seats and selling programmes and cushions. And around 10 to 15 in dressing rooms helping the cast with their costumes. These are all normally Bronze or Silver Duke of*

Edinburgh students working towards their volunteering section."

10. What has been the biggest and smallest show.

*"42<sup>nd</sup> street was a huge set because of the staircase and wooden huge coins we made for them to dance on! The smallest set I think was for Hello Dolly as there wasn't much set for this one."*

11. Where does the orchestra come from?

*"They are all professional musicians, with day jobs but enjoy performing for shows they are all paid."*

12. Do you ever get time to pursue hobbies or interests outside of the school play? What are they?

*"I enjoy reading keeping my professional knowledge up to date. Reading materials*

*around the subject I teach, Health and Social."*

I would like to thank Tanya for allowing me to interview her and to share in the amazing work she does for the school, the children and how her involvement benefits the wider community.

And if I haven't convinced you yet to go and see the unbelievably impressive shows at Aylsham High School, you might like to note that next year show will be a performance of *Joseph and the Amazing Technicolour Dreamcoat*; Opening night Wednesday 10 March to Saturday 13 March 2021.

*If you would like to nominate someone to be interviewed in SPOTLIGHT, please contact Shane Ward on [shaneward@outlook.com](mailto:shaneward@outlook.com) or on 755314 Articles will appear only in Hevingham Magazine.*

## VICTIMS OF DOMESTIC ABUSE YOU ARE NOT ALONE

We are acutely aware coronavirus will have a serious impact on women, children and men who already face domestic abuse in their homes.

Fears over jobs, financial pressure, school closures, working from home and all the other current changes to our day to day lives are likely to result in an increase in domestic abuse.

We do not want you to suffer in silence. As the situation changes daily, we want to ensure you feel you have someone there who can help.

If you are in immediate danger you should call 999 or call police on 101. There are many charities who can offer you support and guidance.

Leeway: 0300 561 0077

Daisy Programme: 01953 880903

Pandora: [www.pandoraproject.org.uk/](http://www.pandoraproject.org.uk/)

Norfolk and Suffolk Victim Care: 0300 303 3706

The Harbour Centre: 01603 276381 (24/7)

Women's Aid: 0808 2000 247 (24/7)

Refuge: 0808 2000 247

GALOP (LGBT+ Anti-violence charity): 0800 999 5428

Mankind Initiative (Male Victims): 01823 334244

Men's Advice Line (Male Victims): 0808 801 0327

Respect: 020 3559 6650

(working with abusers to change their behaviour and male victims of domestic abuse)

If you're a young person and domestic abuse is taking place in your home or relationship, call **Childline** on **0800 1111**.

For more advice and support  
visit [norfolk.police.uk](http://norfolk.police.uk)



# could you foster?



**we urgently need  
foster carers  
in your area**



We can help you to provide a young person with a stable, secure home.

Call us on **0800 389 0143**

Visit us at [www.nexusfostering.co.uk](http://www.nexusfostering.co.uk)

# Hevingham Village Hall

Brick Kiln Road, Hevingham, Norfolk NR10 5NL



## VILLAGE HALL HIRE RATES from 01 April 2018

### NON-FUNCTION HIRE: Exercise classes, Meetings etc

p/hr (min 2hrs)

Residents Non-residents

MAIN HALL <u>or</u> CLUB ROOM	£11	£13
WHOLE VILLAGE HALL HIRE - both rooms.	£16	£20

### DAYTIME FUNCTION HIRE: Kiddies parties, Christenings, Anniversary parties, day time conferences etc. p/hr.

MAIN HALL <u>or</u> CLUB ROOM	£14	£17
WHOLE VILLAGE HALL HIRE - both rooms.	£20	£25

### EVENING FUNCTIONS - 6PM until Midnight : Quizzes, Parties, evening conferences etc.

MAIN HALL <u>or</u> CLUB ROOM	£100	£120
WHOLE VILLAGE HALL HIRE – both rooms.	£135	£170

Extra hours will be charged at the appropriate hourly rate.

*These hirings will require a damage deposit which is fully refundable if all Terms & Conditions are complied with:*

£100	£150
------	------

### SATURDAY EVENINGS – MINIMUM HIRE RATE £100.

Additional £30 fee if alcohol is to be sold on the premises and own TEN must be applied for from BDC.

### ALL DAY HIRE - 9AM until MIDNIGHT : Weddings, Anniversaries, Parties etc.

MAIN HALL <u>or</u> CLUB ROOM	£160	£180
WHOLE VILLAGE HALL HIRE -both rooms.	£200	£230

*These hirings will require a damage deposit which is fully refundable if all Terms & Conditions are complied with:*

£100	£150
------	------

All hirings include the use of the kitchen facilities, cloakroom, baby changing facilities and a large carpark.

### BOOKINGS CLERK CONTACT DETAILS:

JULIE ELIA

THE COTTAGE

38 BRICK KILN ROAD

HEVINGHAM NR10 5NL

01603754660/07776021481. Email: [julie.elia@hotmail.co.uk](mailto:julie.elia@hotmail.co.uk)



# Hevingham Village Hall

Brick Kiln Road, Hevingham, Norfolk NR10 5NL - Tel: 01603 754570



Hello everyone.

The village hall and children's play area are still shut due to COVID-19 regulations. Sadly many lovely events and all our regular hires have been cancelled but hopefully we will be able to open again in the near future. I'll notify you via the Village Hall Facebook page as soon as we're notified.

Hevingham Parish Council took over the running and upkeep of the Village Hall grounds in April and have been using the quiet time to paint the slide & youth shelter, and have added more play bark to the play area ready for a busy summer 🐾. Believe it or not, we've got two problems with the roof leaking at the hall at the moment and are trying to get those sorted out asap.

Other news:

The two new ovens are all ready to use..many thanks to BDC and the Laurel Club who donated towards those.

We hope you're all keeping well and stay safe. Don't hesitate to contact me for information on hiring the hall in the future.

Julie

07776021481/01603 754660.

[Julie.elia@hotmail.co.uk](mailto:Julie.elia@hotmail.co.uk)



**Please clean up after  
your dog.  
Bag it, Bin it!**



The local Recycling Centre is open again and following new distancing measures. 9am -5pm. Please respect the safely measures in place while using the Centre.

#### FLY-TIPPING –

There has been an increase of fly-tipping since the Recycling Centre's closed within the area. Dumping waste is illegal and can be reported online or to the local council.

Please check before using waste removal services that the waste will be disposed of correctly.

If you see any suspicious activity, try to get the vehicle details, date, time, description and report. Let's help keep our village clean.

**Lets Keep Hevingham Tidy !**



**PRECIS MINUTES OF THE MEETING OF  
HEVINGHAM PARISH COUNCIL  
HELD ON 7<sup>th</sup> JANUARY 2020 AT THE VILLAGE  
HALL**

**1. APOLOGIES**

Apologies were received from District Councillor J Neesam.

**2. DECLARATIONS OF INTEREST AND  
DISPENSATION REQUESTS**

There were no declarations of interest or dispensation requests.

**3. MINUTES OF THE LAST MEETING**

Minutes of the meeting held on the 3<sup>rd</sup> December 2019 were agreed by all and signed by the Chairman.

**4. MATTERS ARISING**

- The Clerk advised Highways have advised the issue concerning drainage on the A140 Cromer Road has now been resolved.

- Regarding litter BDC have advised *'There are currently a total of 9 dog and litter bins in Hevingham and all of these are based around the main residential area of the Parish. Broadland would not consider installing anymore bins at this time as this should be enough. In terms of what can be done going forward, it might be worth organising a couple of litter pick events in the Parish using the equipment that we have provided you.'*

*'Also, if we receive complaints about litter then we can arrange for our contractor to do a litter pick of the area. Lastly with regards to bins if the parish council believe that more bins are needed then you can use our commercial litter and dog bin emptying scheme, much like you have with the dog bin at the Village Hall'.*

The Clerk is aware that BDC will only litter pick an area if it meets their specific criteria and small amounts of general litter would not meet that. Providing more bins would come at a cost of around £200.00 per bin per annum. It was agreed Cllr S Benton will organise a litter pick in the Spring and advertise the date on the village Facebook pages.

**5. PUBLIC PARTICIPATION**

- A member of the public explained to the Council their intention to purchase a plot of land on Brick Kiln Road on which to build a family home and is seeking the Council's thoughts before proceeding. In the absence of a proper planning application it was stated that the Council are unable to really comment as the village also needs to have the opportunity to view and comment on any proposals.

It was suggested that the applicant speak to BDC for advice and also the current land owner to see if the sale could be subject to obtaining planning permission. - It was asked if publishing dates could be given for the magazine to ensure that items included will still be relevant when it is printed.

Cllr S Ward will speak to the editor.

- Several people have reported issues with the Vodafone signal in the village of late and Cllr D Holmes is looking into this.

The Chairman will also speak to the owner of the land on which the mast is positioned to see if they are aware of any issues.

**7. MATTERS TO REPORT**

**f. Reports**

**District Councillor** (Reported by Cllr D Roper)

A meeting took place yesterday concerning the GNLP and the next stage will be going out to consultation on the 29<sup>th</sup> January 2020.

Both of the sites in Hevingham have been classed as unsuitable so have been removed.

A new policy has been proposed within the document to allow small scale windfall development of up to 3 dwellings per parish outside of the settlement boundaries however if approved this will not come into effect until 2026.

The Under 5's have submitted a grant application for £500.00 and they are currently awaiting the outcome of this.

**County Councillor**

An increase of 3.9% on Council Tax is being proposed. Hevingham has been put forward for line repainting. Cllr Roper is looking into how much extra has been put into the budget for Northern Highways to cover the maintenance of the NDR.

Cllr A Ramsbottom asked if Highways could install some lighting on the Holt Road at the junction with Brick Kiln Road as it is very dark and difficult to see the junction on approach. Cllr Roper will speak to the local Highway representative and also chase a response on lighting the Church Lane junction with the Cromer Road as nothing has been heard on that.

**6. MATTERS FOR DISCUSSION AND DECISION**

**a. Hevingham Under 5's**

The Clerk has spoken to the Headteacher today and can confirm:

- i) Parents have now been told the Under 5's will re-open after Easter.
- ii) Final costs are still being awaited but the Headteacher will confirm these once known.
- iii) To clarify the costs so far, the School intend to proceed with Option 3 for the roof at £9,000.00 and Option 2 for the walls at £3,500.00 making a maximum total of £12,500.00. The Parish Council's proportion is therefore a maximum of £6,250.00.
- iv) Adverts for staff will be going out next week.
- v) The building is safe to use as it is for now so it is hoped the necessary works will be completed during the Summer holidays to minimise disruption.

**b. Village Hall**

The Clerk has spoken to both the Chair of the Village Hall and their handyman and providing the handyman takes out the appropriate insurance (which he is happy

to do) he could continue to look after the grounds as he does now but as a contractor to the Parish Council instead of the Village Hall.

The only thing that just needs to be resolved is the insurance on the play equipment which the Clerk will sort out with the treasurer.

The Village Hall are happy to agree a responsibility transfer date of the 1<sup>st</sup> April 2020 and this was accepted.

#### **c. Website Accessibility Rules**

The Clerk explained that new rules come into effect on the 23<sup>rd</sup> September 2020 concerning websites and we need to ensure our site is compliant and that we have the appropriate accessibility statement in place.

This is not something the Clerk is able to do herself and is therefore seeking the Council's authority to appoint Mr S Jackman, who helped set up the site initially, to review the site, make any necessary amendments, advise the Clerk on how to stay compliant going forward and produce an accessibility statement.

The cost will be £45.00. All agreed Mr Jackman should be appointed.

#### **d. Grass Cutting Contract for 2020**

The Clerk explained she has now contacted 5 different people and only 2 have been able to quote.

Following discussions all agreed to re-appoint A M Cultivating with removal of scarifying and rolling.

#### **e. Finance**

i) The following accounts were presented for payment and were approved:

Norse Eastern Ltd (Winter magazine printing)	£283.00
F C Hambling (Bus shelter cleaning)	£40.00
E-on (Electricity)	£94.70
HMR&C (PAYE x3)	£121.20
Mrs K Medler (Expenses)	£42.25

The Clerks standing order was paid on the 5<sup>th</sup> January

The following receipts were noted:  
Magazine adverts

£90.00

Bank interest (CBS)

£75.61

Balance at the bank now stands at £45,180.44

#### **f. Allotments**

i) The Clerk has spoken to the handyman concerning rotovating and he is of the opinion rotovating alone would be sufficient, without weed killing, providing the ground was then worked.

However, without doing one to see how long it takes, he would be reluctant to give a price per plot.

The Chairman has a rotovator so will try it himself and see if that works now the ground is wetter.

The community plot 'tenants' are going to have a 'digging day' to see how that works now the ground is wetter and are then intending to put in some raised beds, using funds which have been raised from selling vegetable calendars but would appreciate some funds to purchase tools.

All agreed to fund the wish list in full at £135.00 and allow a cheque payment in advance with receipts to be provided to the Clerk once purchased.

Cllr D Holmes also offered to donate some pallet wood.

#### **g. Wild Flower Meadows (land on The Heath)**

This item to be carried forward to March as the arranged meeting with BDC was cancelled.

#### **h. Planning**

The Chairman confirmed both of the Hevingham sites put forward for the GNLP had not been accepted as they were considered unsuitable and detailed the reasons why.

It was therefore agreed that attending the briefing at BDC on the 22<sup>nd</sup> January, to which the Council had been invited, was not necessary.

### **7. MATTERS TO REPORT**

#### **a. Correspondence / c. Youth advocate report / d. Village Hall report**

Nothing to report.

#### **b. Clerks Report**

The Clerk provided figures from the SAM sign for December - full details will be printed in the Hevingham News.

#### **e. Police Report**

The Clerk advised there were 4 crimes in the village during November: 1 violent or sexual offence (on or near Park/Open Space), 1 anti-social behaviour (on or near Town Corner), 1 anti-social behaviour (on or near Churchill Close) and 1 public order offence (on or near Churchill Close).

Further information can be accessed via [www.police.uk](http://www.police.uk).

### **8. MATTERS FOR FUTURE DISCUSSION AND DATE OF NEXT MEETING**

A resident present explained she had started a running club in the village which now meets every Sunday at the Village Green for a 9:30am start.

All are welcome to attend.

Active Norfolk are helping promote them but are unable to provide any funding so they may need to come to the Parish Council for some funding for high-vis bibs and banners as most of the running is done on the road.

**The meeting closed at 20:40**



## Hevingham Remembers VE Day 75<sup>th</sup> Anniversary Celebrations.

– Friday 8<sup>th</sup> May 2020

Houses throughout Hevingham were decorated in red, white and blue. The Village came together once again ( at distance) and many a street party was had, at home.

The day included a 2 minutes silence on the doorstep, Churchills speech shown on BBC, picnics in the garden with tea and cake/scones. We raised a glass and the nation had a sing along to 'we'll meet again' after a message from the Queen.

The Village was full of colour, pictures were put up the windows of homes and decorations were hung to mark the 75 year Anniversary and to remember the sacrifices made.

Thank you Anthea Coldham for the wonderful decorations on the Village sign.

Well done Hevingham!



### Positions Vacant - Could you help???

**Hevingham Laurel Club paid cook** (for luncheon club and hot meal delivery service )

Please contact Ann Medler - 01603 755224

**Secretary Position** – Please contact Anthea Coldham - 01603 754066

**Treasurer Position** – Please contact Patsy Brummage – 01603 754753

## Rector's Ramblings



These past 2 months have been different and difficult. What has been wonderful is hearing about how the community have pulled together, supported each other, and in particular Hevingham Support 2020 doing so much to coordinate the support across the village.

One of the famous stories from the Bible is the story Jesus told about the Good Samaritan. Despite personal danger, a Samaritan man stopped and helped someone who had been attacked, robbed and left for dead.

The Samaritan cared, gave his own money to an inn keeper to ensure the victim was looked after and was able to recover.

That's true community and support, loving your neighbour.

Thank you to all of you who are doing this in Hevingham.

### The Church is Locked!

Unfortunately, because of the coronavirus, Hevingham church has had to be locked. At the time of writing only Church officials i.e. myself and Mike Delph, are allowed to go in for very restricted purposes. I do hope the church may be unlocked soon and at some point services able to take place again. In the meantime, please come and enjoy the churchyard, a beautiful and quiet place.

### From the Registers

Our prayers go to the family of Vera May Burton whose graveside funeral took place on the 7 April 2020

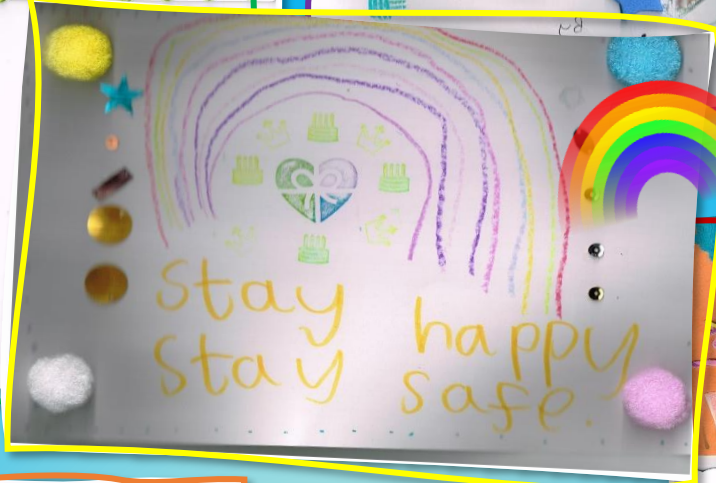
### Cards from the children

Hevingham Primary School rose to a wonderful challenge in May. I contacted the Head teacher Lydia Board to see if the children could draw pictures and/or make cards for villagers who are to keep in isolation, to help cheer them up.

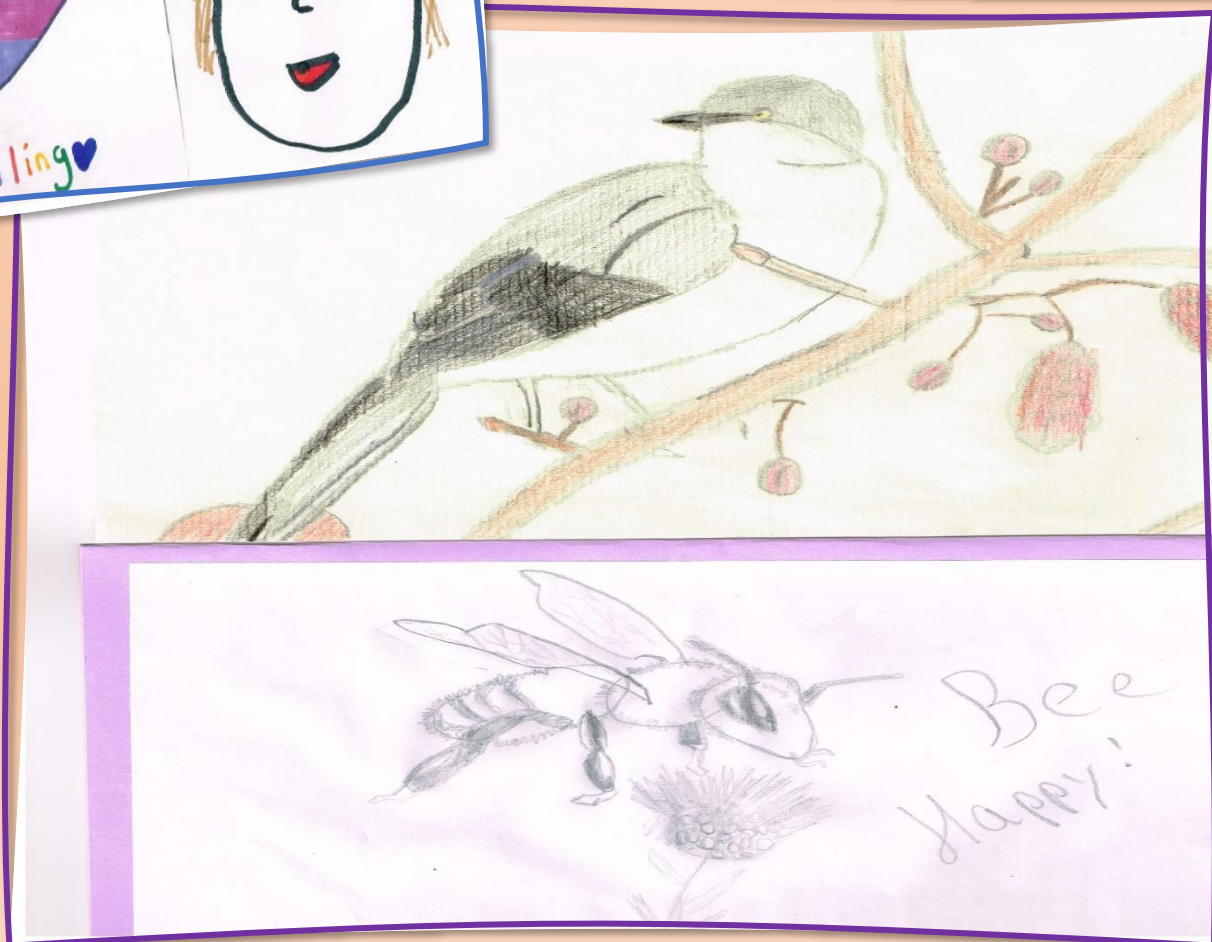
With her support and the help of the RE teacher Jenny Smith, the children have made some wonderful cards. Many of them we're enjoying in this magazine.

A huge thank you to the wonderful children who made this happen!  
Revd Margaret McPhee, Rector











bee happy



BE HAPPY!

keep smiling :)



Be  
happy!

BE HAPPY!





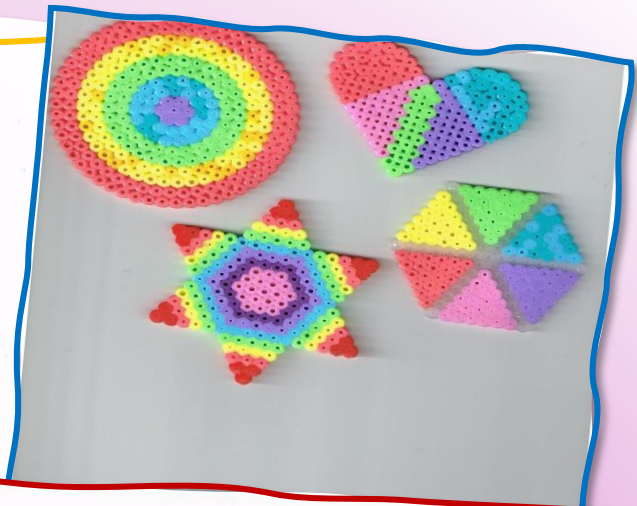


Look on back →











# Grow your Own Fruit & Veg

## Tempted to take on an allotment?

Taking on an allotment can be daunting-especially with no previous experience and limited knowledge. However, the positive benefits that can be gained from this activity are well worth the effort.

I found the key was, to prepare a small area and plant something that thrives easily, gives good ground cover (to avoid time spent weeding) and of course a veg or fruit you like to eat! The pleasure gained from seeing plants grow from seed or tiny seedlings is immeasurable. You can then progress at your own pace, learning as you go along.

Studies have been conducted on the benefits of allotment gardening on health and wellbeing. A systematic review of the literature published in the British journal of Occupational Therapy in 2015 (by Genter, Roberts, Richardson and Sheaff) showed it provides a stress-relieving refuge, contributes to a healthier lifestyle, creates social opportunities, provides valued contact with nature and enables self- development.

*Angela, Hevingham Allotment Holder*

Spaces for a shared allotment for beginner growers are available; your own space within one plot but with guidance and support from other allotment holders. Contact [hevinghampc@live.co.uk](mailto:hevinghampc@live.co.uk)



## Resourceful Growing

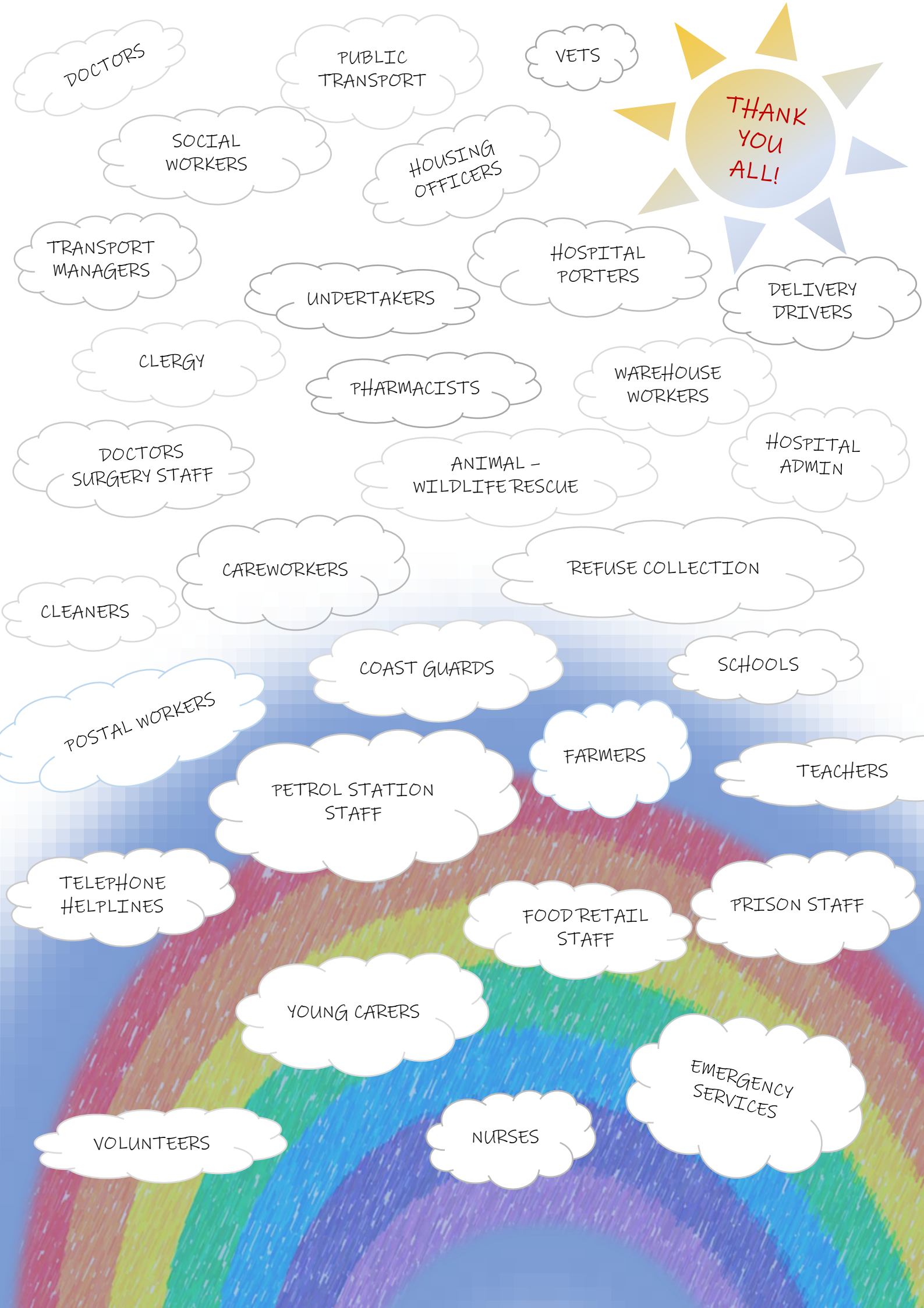
Difficult to get the bits you think you need? Fear not! There are plenty of ways to get started, and it's never too late! Here's just few ideas:

- Seed swap or see what freebies people may need help to get rid of (seeds will all have an expiry date, but can often germinate a little past this time)
- Make your own mini greenhouses using an empty mushroom tray for the base, and upside down grape box for the lid . Or cut an old large plastic bottle around the middle, leaving a small piece attached so you have a hinged lid (leave the cap off for air circulation)
- Make your own seed compost , lots of seeds will germinate in normal compost but to give them the best chance a fine soil low in nutrition is best. There are lots of recipes online to make your own using things such as rotted woodchip, rotted leaves, and compost or topsoil.
- Some veg thrive in plant pots including: Lettuce, Beans, Chard, Onions, Radishes, Sweet Peppers, Tomatoes
- Feeling a bit more ambitious or creative? Planters made from pallet wood are a great use of waste materials.
- Keeping them well fed! Nature luckily provides us with some surprisingly handy plants that are abundant in nutrients to fuel your veggies; Leave nettles and comfrey in water outside and then dilute a few of weeks later and you have your own liquid feed! (follow an online guide for all the steps needed)
- Lastly—it really is true— talking/singing to your plants really does help! ... Research behind this revealed next time!

*Send us your fruit/veggie growing pics and have your picture shared in the next edition! Have ideas you'd like to share? We would love to hear from you! Get in touch to help write the next article.*

*Becky, Hevingham Allotment Holder*





THANK  
YOU  
ALL!

DOCTORS

PUBLIC  
TRANSPORT

VETS

SOCIAL  
WORKERS

HOUSING  
OFFICERS

TRANSPORT  
MANAGERS

UNDERTAKERS

HOSPITAL  
PORTERS

DELIVERY  
DRIVERS

CLERGY

PHARMACISTS

WAREHOUSE  
WORKERS

DOCTORS  
SURGERY STAFF

ANIMAL -  
WILDLIFE RESCUE

HOSPITAL  
ADMIN

CAREWORKERS

REFUSE COLLECTION

CLEANERS

COAST GUARDS

SCHOOLS

POSTAL WORKERS

PETROL STATION  
STAFF

FARMERS

TEACHERS

TELEPHONE  
HELPLINES

FOOD RETAIL  
STAFF

PRISON STAFF

YOUNG CARERS

EMERGENCY  
SERVICES

VOLUNTEERS

NURSES